



*Building On Our Past, Building For Our Future:
Therkildsen Industrial Engineering Building*

A NEW FACILITY FOR THE DEPARTMENT OF INDUSTRIAL AND MANUFACTURING SYSTEMS ENGINEERING





We feel strongly about investing in the future of industrial engineering at Iowa State. Joyce and I continue to be impressed with the quality of an Iowa State industrial engineering education, and the visionary leadership demonstrated by the department and university. Providing a state-of-the-art facility is one of the best ways to ensure the department is able to evolve and expand as the professional field advances.

C.G. "Turk" Therkildsen



A LEGACY OF EXCELLENCE

Today's complex, technology-centered world demands professionals who are ready to pursue creative solutions to vexing challenges and help move our nation's economy forward. Since the Department of Industrial and Manufacturing Systems Engineering was established in 1929 (then called General Engineering), its hallmark has been providing a world-class education that prepares industrial engineers to become leaders and problem-solvers across a wide range of industries.

As the field evolves and expands, the department must continue to provide a top-notch education that combines the best in teaching, hands-on learning and leading-edge research.

In the Therkildsen Industrial Engineering Building – a new state-of-the-art facility being built on Iowa State's campus – the department will have the means to train even more budding professionals to design innovative and sustainable production and service processes, as well as respond to the changing needs of the industry.



A FACILITY FOR TOMORROW

The exciting new Therkildsen Industrial Engineering Building will centralize, facilitate and inspire high-quality, integrated learning for the Department of Industrial and Manufacturing Systems Engineering (IMSE). The building will also strengthen the link between undergraduate education, graduate education, and research and discovery – and prepare a dynamic workforce for a wide range of industry needs.

Located southwest of Howe Hall, the new home for the IMSE Department will offer nearly 80,000 gross square feet of space, including four stories and a design that complements the current aesthetic of the Iowa State engineering corridor.

The facility will feature:

- Flexible space that integrates teaching, learning, research and innovation, and can be adapted to the evolving needs of the university environment and the industries the department serves.
- A design highlighting innovative laboratories that will distinguish the department as a national leader in providing an experiential education and a destination for researchers seeking to generate new knowledge to advance society.
- An inviting and inclusive environment that fosters connection and collaboration among students, staff and faculty.



A TRANSFORMATIONAL GIFT, WITH AN OPPORTUNITY TO PARTNER

The building that will become home to the IMSE Department has a projected total cost of \$69 million. In recognition of a lead gift of \$42 million from C.G. “Turk” and Joyce A. McEwen Therkildsen, the building will be named the Therkildsen Industrial Engineering Building.

The Therkildsens’ committed gift is part of their enduring relationship with Iowa State. Members of the class of 1959, C.G. “Turk” Therkildsen, semi-retired as CEO and chairman of Industrial Hard Chrome in Geneva, Illinois, is an industrial engineering alumnus, and Joyce A. McEwen Therkildsen graduated with degrees in zoology and physical education.

The College of Engineering seeks an additional \$10 million in private support from alumni, friends and corporate partners who share this exciting vision for the department’s future. A range of prominent naming opportunities are offered, including learning-friendly classrooms and collaboration spaces, innovative laboratories, administrative and faculty offices, and other spaces. Please refer to the separate list of named space opportunities for specific giving levels.

The Therkildsens believe that the great education our industrial and manufacturing systems engineering students receive at Iowa State instills character, integrity and the drive to better themselves as they improve processes to help people. This new facility will ensure that the Department of Industrial and Manufacturing Systems Engineering remains a top-ranked program and a premier destination for students, faculty and staff for generations to come.

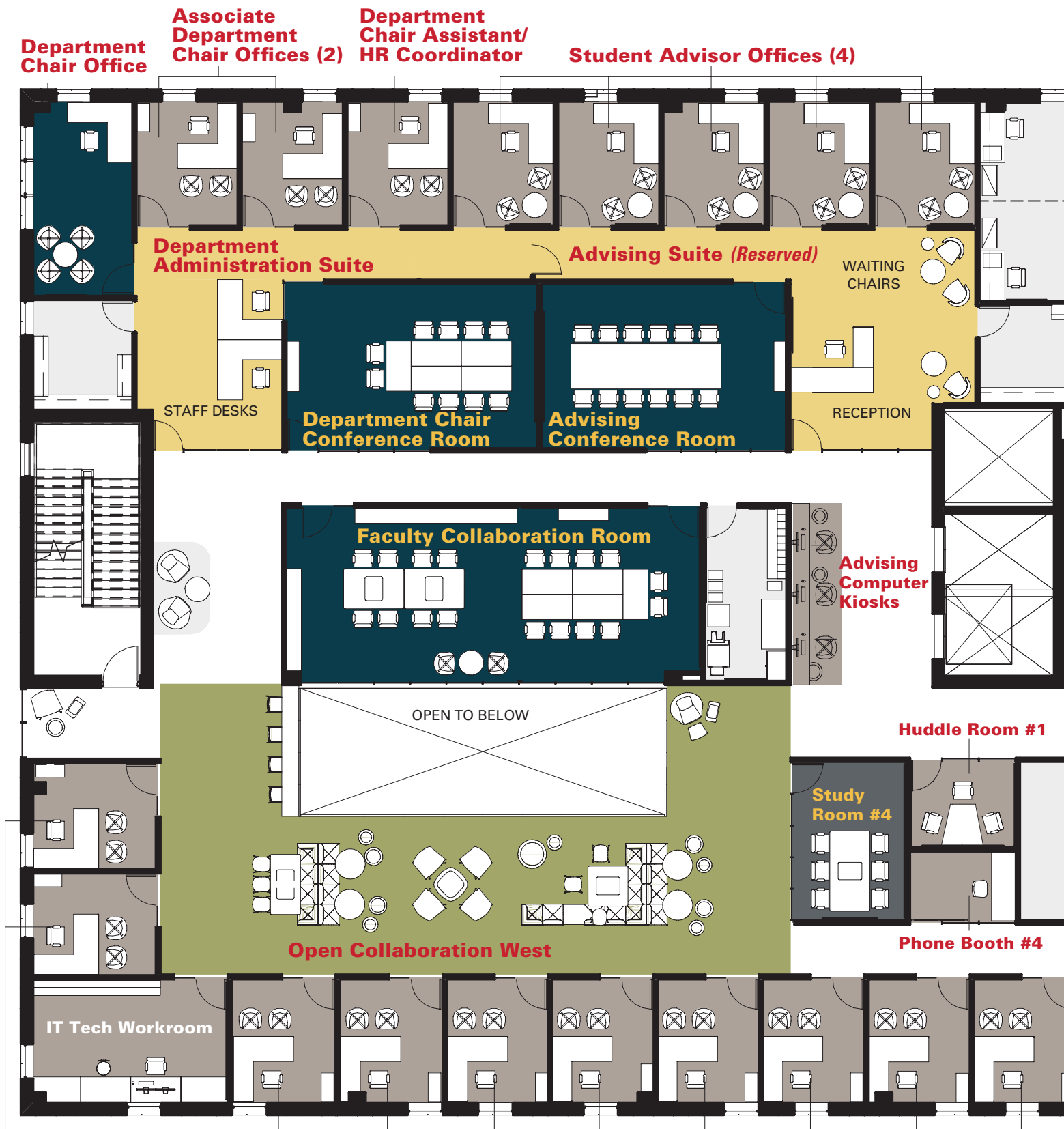
***Sarah Ryan,
the C.G. “Turk” and Joyce A.
Therkildsen Department Chair
of Industrial and Manufacturing
Systems Engineering***



ENTRY LEVEL

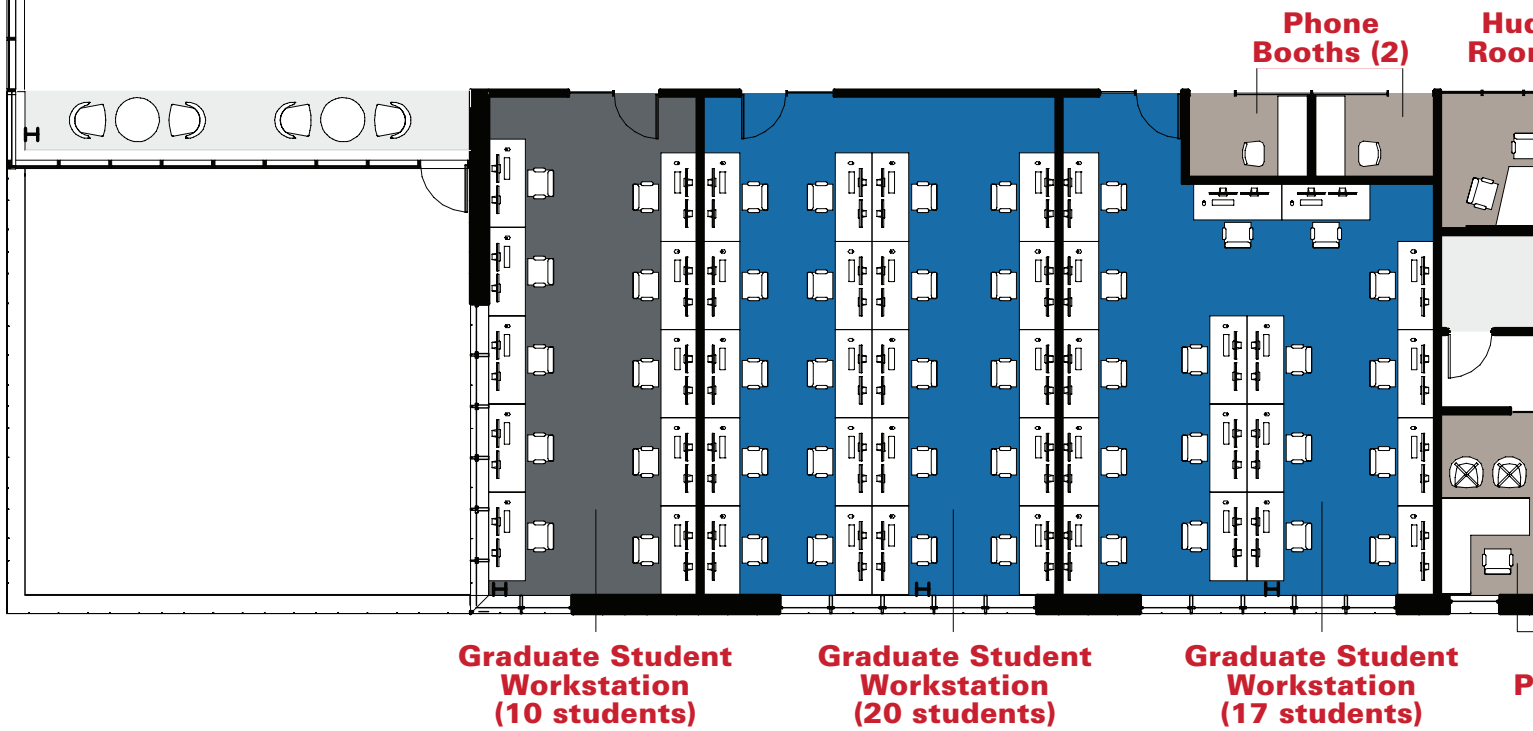
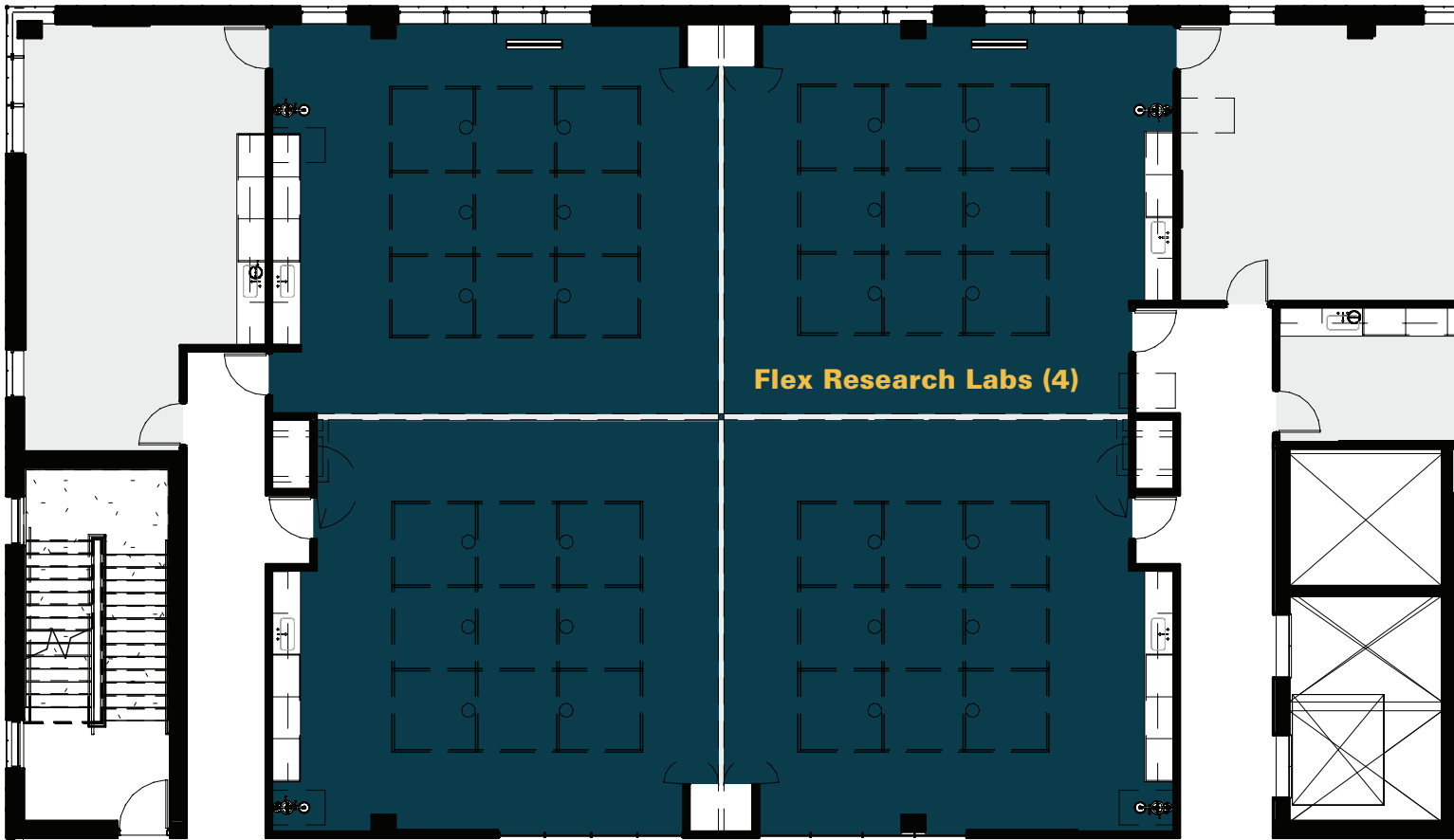


- \$250,000
- \$150,000
- \$100,000
- \$50,000



SECOND LEVEL











THE KILDSSEN INDUSTRIAL ENGINEERING BUILDING AT IOWA STATE UNIVERSITY

LEADERSHIP NAMING OPPORTUNITIES

ENTRY LEVEL	GIFT LEVEL
Team Based Learning (TBL) Auditorium	\$ 3,000,000
Advanced Manufacturing Lab	\$ 3,000,000
Large Computing Lab	\$ 1,500,000
Learning Community	\$ 1,500,000
West Lobby (Auditorium Lobby/TBL Pre-function)	\$ 1,000,000
Classroom	\$ 750,000
Advanced Manufacturing Lab Shop	\$ 500,000
Teaching Assistant Collaboration	\$ 500,000
Graduate Student Workstation (Capacity 12 students)	\$ 150,000

LEVEL TWO

Capstone Design Lab	\$ 2,000,000
Advising Suite	<i>RESERVED</i>
Department Administration Suite	\$ 1,000,000
Open Collaboration East (Above Lobby)	\$ 500,000
Open Collaboration West (Above TBL)	\$ 500,000
Advising Conference Room	\$ 250,000
Department Chair Office	\$ 250,000
Department Chair Conference Room	\$ 250,000
Faculty Collaboration Room	\$ 250,000
Study Room #4	\$ 100,000
Faculty & Staff Kitchenette	<i>RESERVED</i>
Capstone Rooms (2)	<i>RESERVED</i>
Student Advisor Offices (4)	\$ 50,000
Advising Computer Kiosks	\$ 50,000
Student Organization Lockers	\$ 50,000
Associate Department Chair Offices (2)	\$ 50,000
Department Chair Assistant/HR Coordinator	\$ 50,000
Faculty Offices (16)	\$ 50,000
IT Tech Workroom	\$ 50,000
Huddle Room #1	\$ 50,000
Phone Booth #4	\$ 50,000

LEVEL THREE

	GIFT LEVEL
High Bay Human Factors & Ergonomics Lab	\$ 750,000
Low Bay Human Factors & Ergonomics Lab	\$ 750,000
Flex Research Labs (4)	\$ 250,000
Operations Research & Analytics Large Teaming (1)	<i>RESERVED</i>
Graduate Student Workstation (Capacity 20 students)	\$ 150,000
Graduate Student Workstation (Capacity 17 students)	\$ 150,000
Graduate Student Workstation (Capacity 10 students)	\$ 100,000
Operations Research & Analytics Medium Teaming (2)	\$ 100,000
Operations Research & Analytics Small Teaming (2)	\$ 50,000
One-Button Studio	\$ 50,000
Faculty Offices (9)	\$ 50,000
Huddle Room #2	\$ 50,000
Phone Booths (2)	\$ 50,000
Graduate Student Kitchenette	\$ 50,000

LEVEL FOUR

Small Computing Lab	\$ 500,000
Immersive Presence Lab & Control Room	\$ 500,000
High Information Security Lab	\$ 250,000
Graduate Student Workstation (Capacity 15 students)	\$ 150,000
Open Collaboration East	\$ 150,000
Open Collaboration West	\$ 100,000
Graduate Student Workstation (Capacity 10 students)	\$ 100,000
Conference Room (7 seats)- 2	\$ 100,000
Faculty Offices (7)	\$ 50,000
Lecturer/Adjunct Faculty Offices (2)	\$ 50,000
Study Rooms (3)	\$ 50,000
Phone Booth	\$ 50,000

Please contact Carrie Sutherland for the most-up-to-date list of spaces available for naming opportunities.

Carrie Sutherland*Executive Director of Development*

515.297.8492

csutherland@foundation.iastate.edu



**IOWA STATE
UNIVERSITY
FOUNDATION**

2505 University Boulevard
P.O. Box 2230
Ames, Iowa 50010-2230
515.294.4607
www.foundation.iastate.edu

